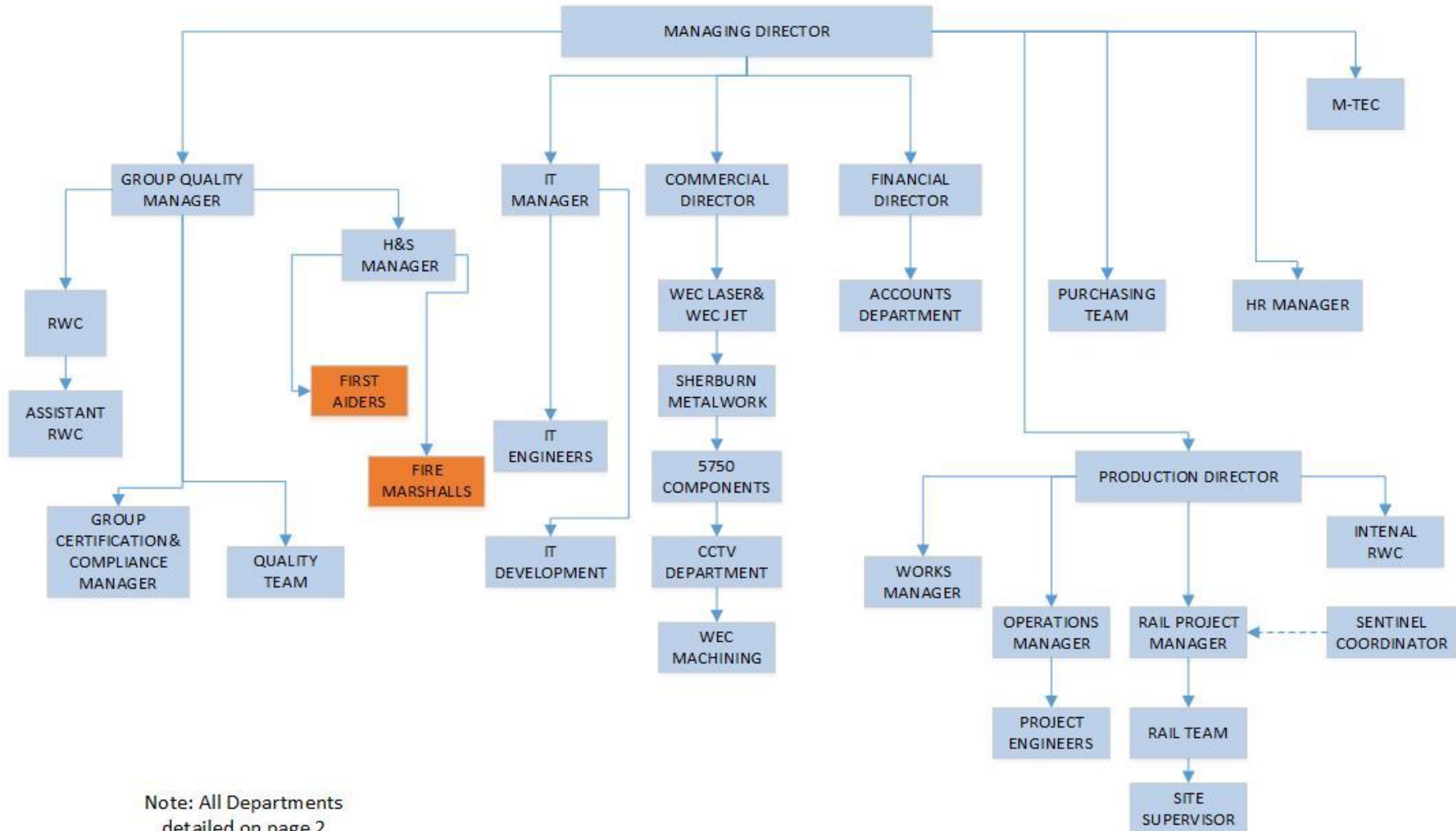
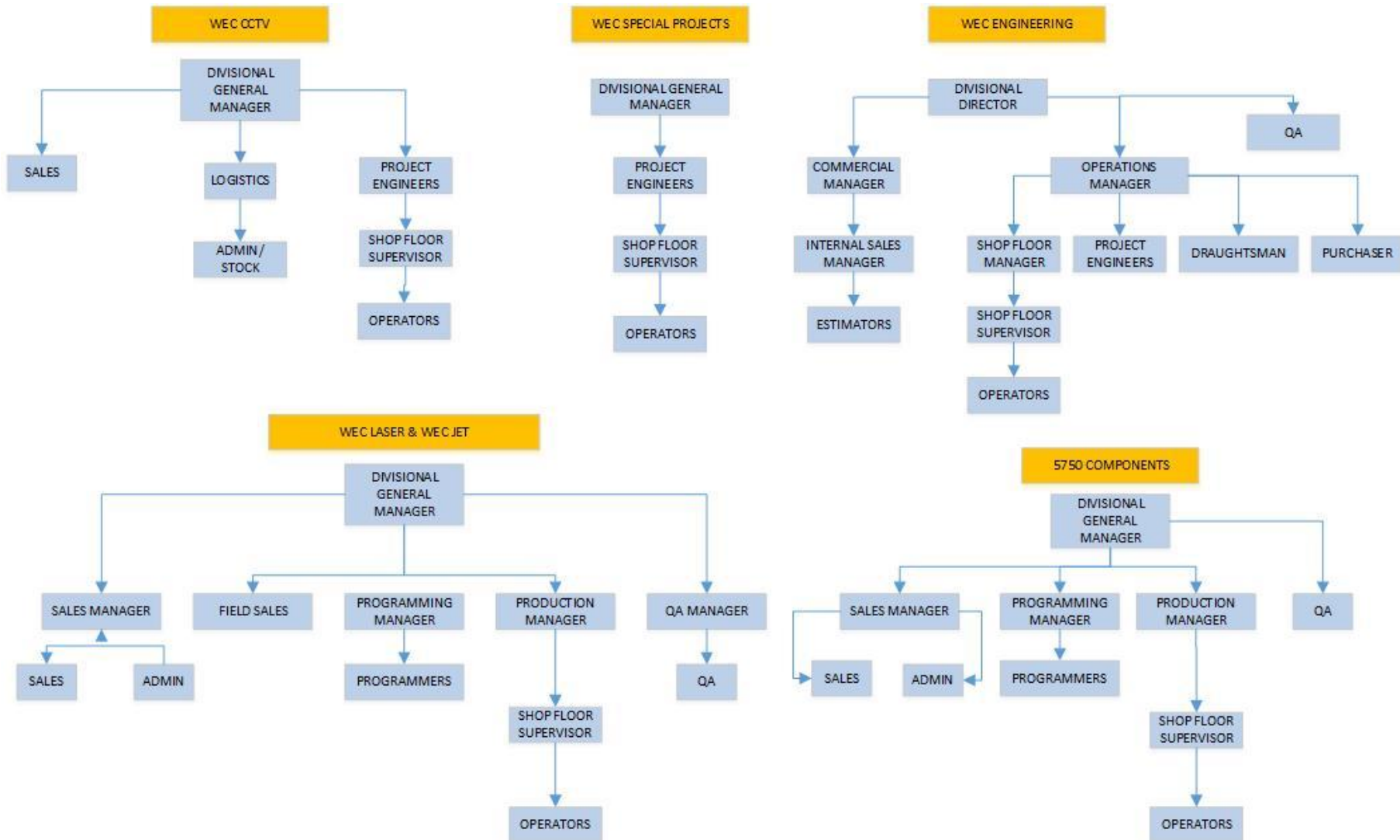
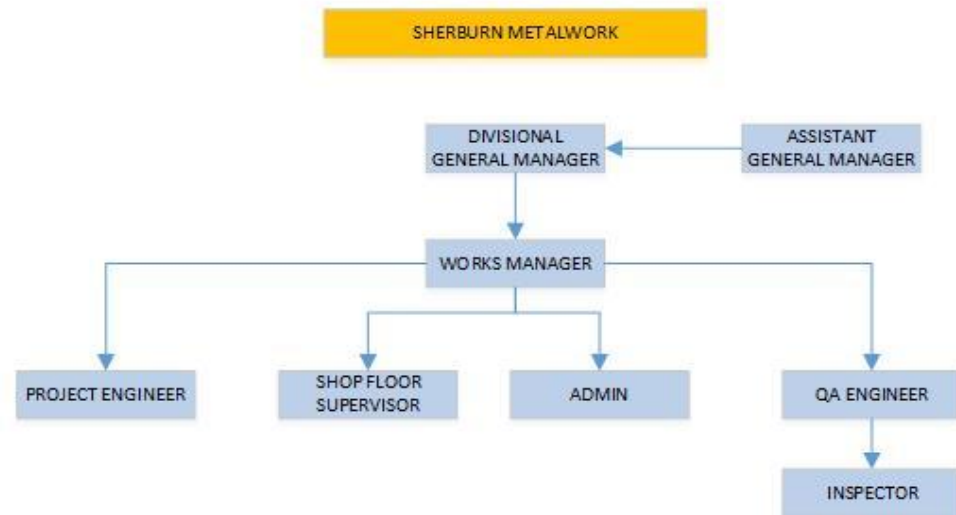
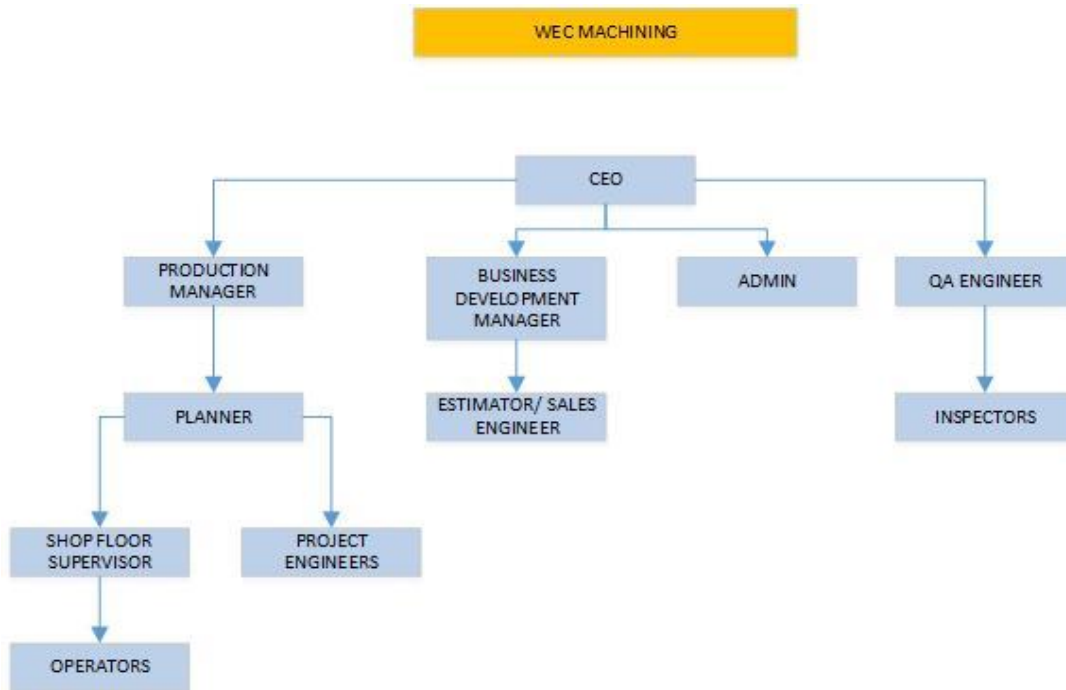


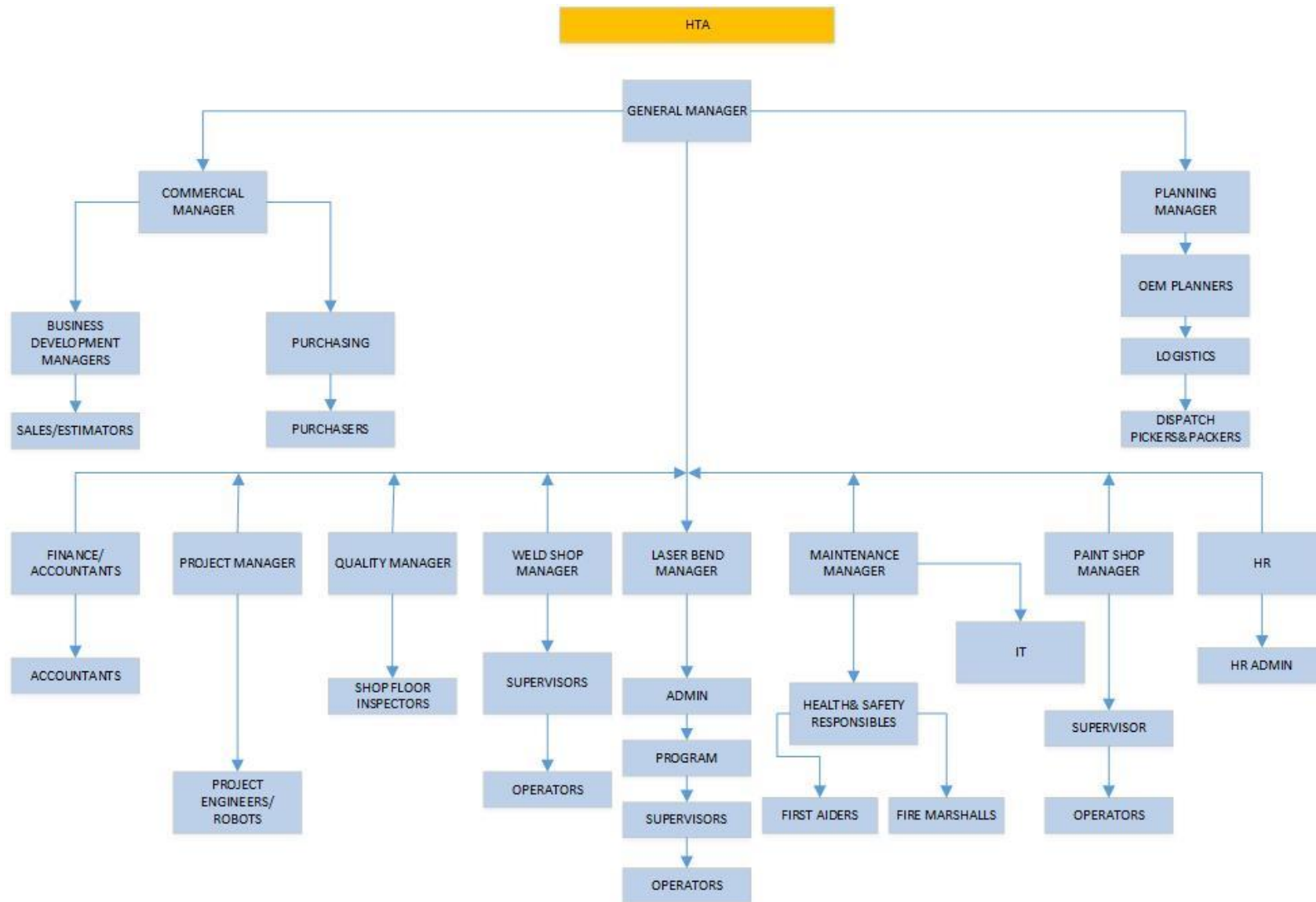
WEC GROUP
QUALITY ORGANIZATION
CHART



Note: All Departments detailed on page 2









ORGANIZATIONAL ROLES, RESPONSIBILITY AND AUTHORITY

MANAGING DIRECTOR

- Responsible for the satisfactory operation of the Organization
- Responsible for the formulation and implementation of the Quality Policy relating to all quality requirements
- Responsible for the formulation and implementation of the Fire, Environmental and Health & Safety Policy

GROUP QUALITY MANAGER

- Responsible to manage Group Quality Systems
- Responsible for Management Reviews and secured communication
- Responsible for the coordination of the Quality Team
- Responsible for all internal quality audits
- Reports to the Managing Director

GROUP CERTIFICATION & COMPLIANCE MANAGER

- Responsible of maintaining HSQE and welding company's certifications
- Responsible with maintaining and updating The Business Excellence Manual, Safety Manual and Welding Manual
- Responsible for Maintaining and updating Procedures, policies and instruction and all standardized documented information
- Responsible for Monitoring Quality performance within the organization
- Responsible for all internal quality audits
- Reports to the Quality Group Manager

RWC

- Responsible for welding system to ISO 3834, EN 1090 and EN 15085
- Responsible for liaison with external RWCs
- Responsible to overview and maintain performance in welding
- Reporting to Group Quality Manager

HEALTH&SAFETY MANAGER

- Responsible for implementation and maintaining the occupational and health & safety system
- Responsible for safety inductions, safety training, incidents and accidents investigation, communication
- Responsible for OHS performance and monthly reporting
- Responsible for internal occupational screening of employees
- Reports to Group Quality Manager

PURCHASING MANAGER

- Responsible for the Group Purchasing
- Responsible with the liaison between the Group and interested parties (professional advisors, insurers)
- Reports to the Managing Director

HR MANAGER

- Responsible for issues related to employees
- Responsible for recruitment and employment
- Reports to the Managing Director

FINANCIAL DIRECTOR

- Responsible for all aspects of the Organization's Finances
- Responsible for all issues within the Accounts Department
- Reports to the Managing Director

COMMERCIAL DIRECTOR

- Responsible for all commercial aspects of the business and Sales Department
- Reports to the Managing Director

PRODUCTION DIRECTOR

- Responsible for all issues within WEC- Engineering
- Reports to the Managing Director

DIVISIONAL GENERAL MANAGERS, including WEC MACHINING CEO

- Responsible for all issues within local divisions
- Report to the MD