

# WEC

GROUP



## CCTV POLES & STRUCTURES, DESIGNED & MANUFACTURED IN THE UNITED KINGDOM

Supplying camera mounting solutions for over 40 years to the following sectors:

- Government
- Leisure & Tourism
- Oil & Gas
- Airports & Harbours
- Private Energy & Utilities
- Petrochemical



# intersec

# EXPORT

# INTRODUCTION

WEC Group Limited understands the demand for specific CCTV installation expertise in the global markets. We have a dedicated Export Division understanding overseas installations and offering support from initial tender stage until project completion including supporting design documentation, full export documentation and shipping management.

Our range of CCTV Towers and associated bracketry has been specifically designed for use within the Petrochemical and Gas Industries. We have over 40 years of expertise in the design, production and manufacturing of CCTV mounting structures supplying to some of the world's leaders of CCTV Installations.

For all your CCTV Structure requirements please contact WEC's camera mounting division direct in the United Kingdom on: +44 (0)1254 700200 or email: [cctvexport@wecl.co.uk](mailto:cctvexport@wecl.co.uk)



## EXPORT

The WEC CCTV Export division specialises in the requirements and logistical processes for overseas installations.

## LOGISTICS

Full logistic solutions available covering every region of the world by all modes of transport whether your requirements are by land, sea, air or multimodal. WEC offers a professional service from origin to the final destination.

## SERVICE

We strive to offer an unparalleled level of service from initial design to completion. Many of our customers have developed their portfolios with the assistance of our services and expertise.



FAST QUOTATION  
TURNAROUND WITH  
THE MAJORITY OF  
PRODUCTS AVAILABLE  
FROM STOCK



DESIGNED AND  
MANUFACTURED IN  
THE UNITED KINGDOM.



# WDT RANGE

## SPECIFICATIONS

- Standard 101.6mm PCD fixing can be modified on request.
- Bolt down version using a template and bolt set.
- Built in cable entry and exit points.
- Standard heights of 4, 6, 8 and 10 metres. Other heights available on request.
- Compatible with WEC adaptors, accessories and anti-climb brackets.

## STANDARDS

### Structural Steelwork:

BS EN 10210-1:1994,  
BS EN 10210-2:1997

**General Steelwork:** BS1449:1991, BS1387:1985,  
BS EN 10025:1993

### Hot Dipped Galvanised:

BS EN ISO 1461:2009

**Welding Procedures:** Comply with BS EN 1011-2:2001

### Fasteners: Grade 8.8

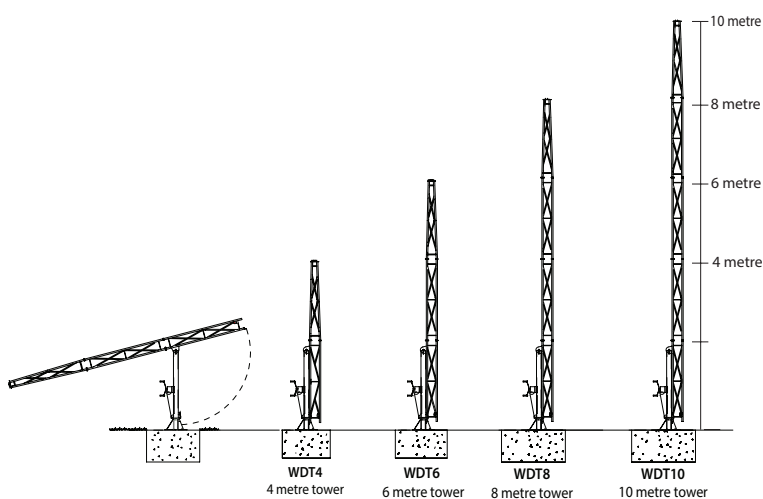
BS3692:2001, BS4190:2001,  
DIN931, DIN934

### Design Wind Loading:

In accordance with CP3 chapter V Pt 2 & BS 6399 Pt 2:1997

**Paint Finishes:** BS4800 and RAL colour range

## TECHNICAL SPECIFICATION



## MODEL REFERENCE

**WDT4** - 4 metre tower

**WDT6** - 6 metre tower

**WDT8** - 8 metre tower

**WDT10** - 10 metre tower

# WD RANGE

## SPECIFICATIONS

- Standard pan and tilt fixing of 101.6 PCD.
- Fixings included for telemetry receiver.
- Built in cable entry and exit points.
- Two metre sectional construction.
- Buried root or flange-mounted versions available.
- Standard heights available from 4 to 12 metres.
- Compatible with WEC adaptors, accessories and anti-climb brackets.

## STANDARDS

### Structural Steelwork:

BS EN 10210-1:1994,  
BS EN 10210-2:1997

**General Steelwork:** BS1449:1991, BS1387:1985,  
BS EN 10025:1993

### Hot Dipped Galvanised:

BS EN ISO 1461:2009

**Welding Procedures:** Comply with BS EN 1011-2:2001

### Fasteners: Grade 8.8

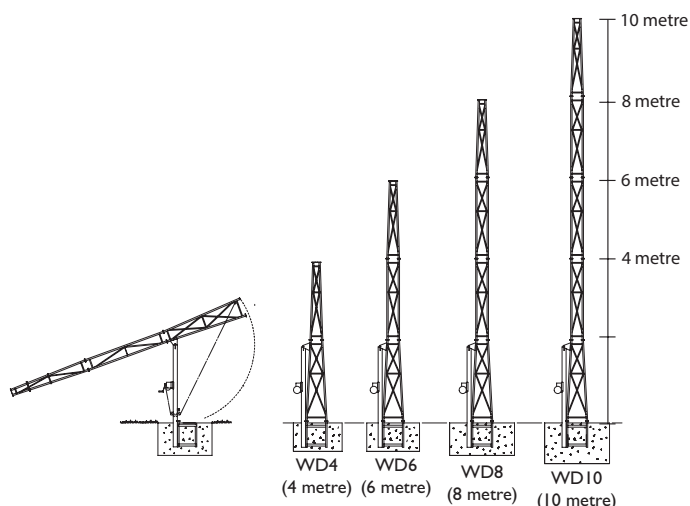
BS3692:2001, BS4190:2001,  
DIN931, DIN934

### Design Wind Loading:

In accordance with CP3 chapter V Pt 2 & BS 6399 Pt 2:1997

**Paint Finishes:** BS4800 and RAL colour range

## TECHNICAL SPECIFICATION



## MODEL REFERENCE

**WD4** - 4 metre tower    **WD6** - 6 metre tower  
**WD8** - 8 metre tower    **WD10** - 10 metre tower  
**WD12** - 12 metre tower

# TPT RANGE

## SPECIFICATIONS

- Available in heights of 4, 6, 8 and 10 metres.
- Standard pan and tilt fixing of 101.6 PCD.
- Built in cable entry and exit points.
- Compatible with WEC adaptors, accessories and anti-climb brackets.

## STANDARDS

**Structural Steelwork:**  
BS EN 10210-1:1994,  
BS EN 10210-2:1997

**General Steelwork:** BS1449:1991, BS1387:1985,  
BS EN 10025:1993

**Hot Dipped Galvanised:**  
BS EN ISO 1461:2009

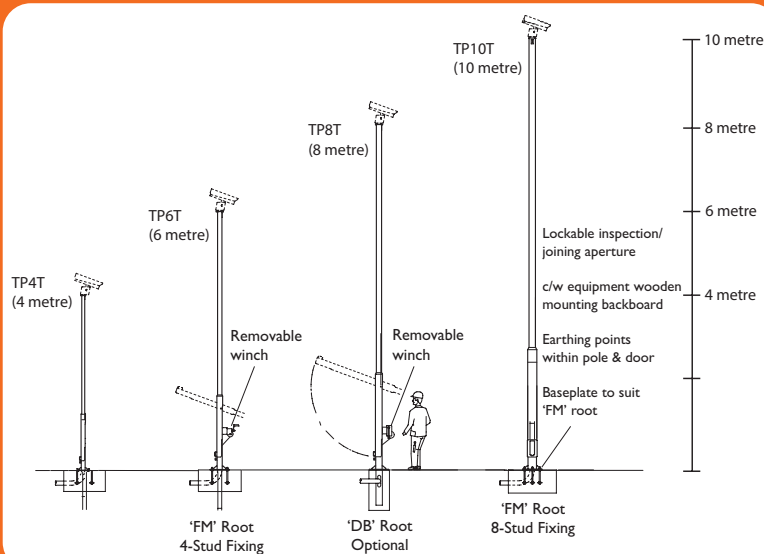
**Welding Procedures:**  
Comply with  
BS EN 1011-2:2001

**Fasteners:** Grade 8.8  
BS3692:2001, BS4190:2001,  
DIN931, DIN934

**Design Wind Loading:**  
In accordance with CP3chapter V Pt 2 & BS 6399 Pt2:1997

**Paint Finishes:** BS4800 and RAL colour range

## TECHNICAL SPECIFICATION



## MODEL REFERENCE

**TP4T** - 4 metre pole   **TP6T** - 6 metre pole  
**TP8T** - 8 metre pole   **TP10T** - 10 metre pole

# MTP RANGE

## SPECIFICATIONS

- Standard heights 4, 6, and 8 metres. Other heights available on request.
- Standard 101.6mm PCD fixing can be modified on request.
- Built in cable entry and exit points.
- Compatible with WEC adaptors, accessories and anti-climb brackets.

## STANDARDS

### Structural Steelwork:

BS EN 10210-1:1994  
BS EN 10210-2:1997

### General Steelwork: BS1449:1991

BS1387:1985  
BS EN 10025:1993

### Hot Dipped Galvanised:

BS EN ISO 1461:2009

### Welding Procedures: Comply with: BS EN 1011-2:2001

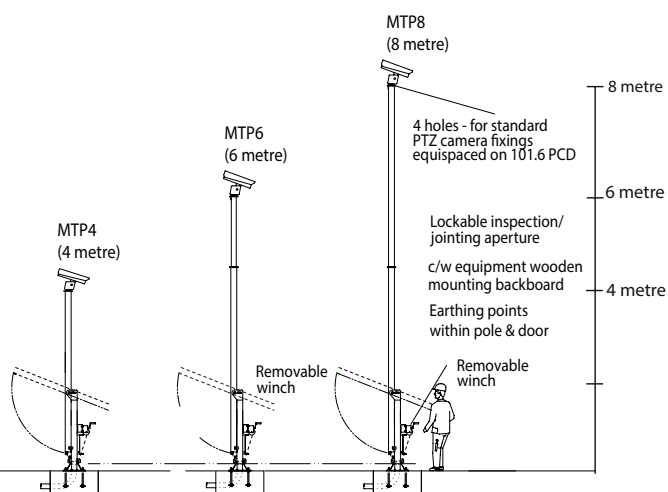
**Fasteners:** Grade 8.8 BS3692:2001, BS4190:2001  
DIN931, DIN934

### Design Wind Loading:

In accordance with CP3 chapter V Pt 2 & BS 6399 Pt 2:1997

**Paint Finishes:** BS4800 and RAL colour range

## TECHNICAL SPECIFICATION



## MODEL REFERENCE

**MTP4**

4 metre pole

**MTP6**

6 metre pole

**MTP8**

8 metre pole

# ETPS RANGE

## SPECIFICATIONS

- Standard pan and tilt fixing of 101.6 PCD.
- Special dome mounting brackets available.
- Built in cable entry and exit points.
- Compatible with WEC adaptors, accessories and anti-climb brackets.
- 'Pocket' type roots available for restricted foundation locations.
- Other heights available on request.

## STANDARDS

**Structural Steelwork:**  
BS EN 10210-1:1994,  
BS EN 10210-2:1997

**General Steelwork:** BS1449:1991, BS1387:1985,  
BS EN 10025:1993

**Hot Dipped Galvanised:**  
BS EN ISO 1461:2009

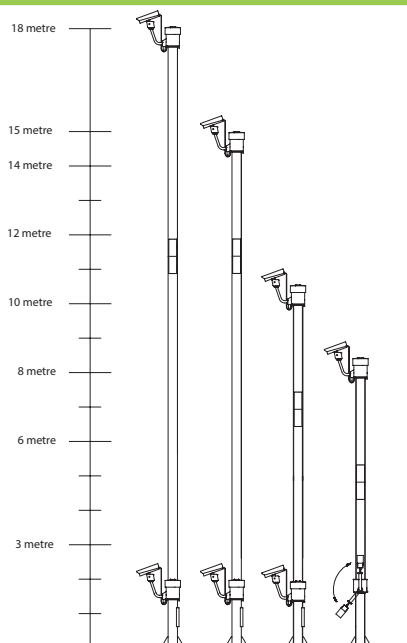
**Welding Procedures:** Comply with BS EN 1011-2:2001

**Fasteners:** Grade 8.8  
BS3692:2001, BS4190:2001,  
DIN931, DIN934

**Design Wind Loading:**  
In accordance with CP3 chapter V Pt 2 & BS 6399 Pt 2:1997

**Paint Finishes:** BS4800 and RAL colour range

## TECHNICAL SPECIFICATION



### Economy Trolley Pole

ETPS6 6 metre pole

ETPS8 8 metre pole

ETPS10 10 metre pole

ETPS12 12 metre pole

ETPS14 14 metre pole

ETPS15 15 metre pole

ETPS18 18 metre pole

### Cabinet Based Trolley Pole

CBTPS6 6 metre pole

CBTPS8 8 metre pole

CBTPS10 10 metre pole

CBTPS12 12 metre pole

CBTPS14 14 metre pole

CBTPS15 15 metre pole



Supplied in sections for ease of shipping, handling and installation





# CDC TROLLEY POLE

## \* NEW PRODUCT \*

### SPECIFICATIONS

- Standard pan and tilt fixing of 101.6 PCD.
- Special dome mounting brackets available.
- Built in cable entry and exit points.
- Compatible with WEC adaptors, accessories and anti-climb brackets.
- 'Pocket' type roots available for restricted foundation locations.
- Other heights available on request.

### STANDARDS

**Structural Steelwork:**  
BS EN 10210-1:1994,  
BS EN 10210-2:1997

**General Steelwork:** BS1449:1991, BS1387:1985,  
BS EN 10025:1993

**Hot Dipped Galvanised:**  
BS EN ISO 1461:2009

**Welding Procedures:** Comply with BS EN 1011-2:2001

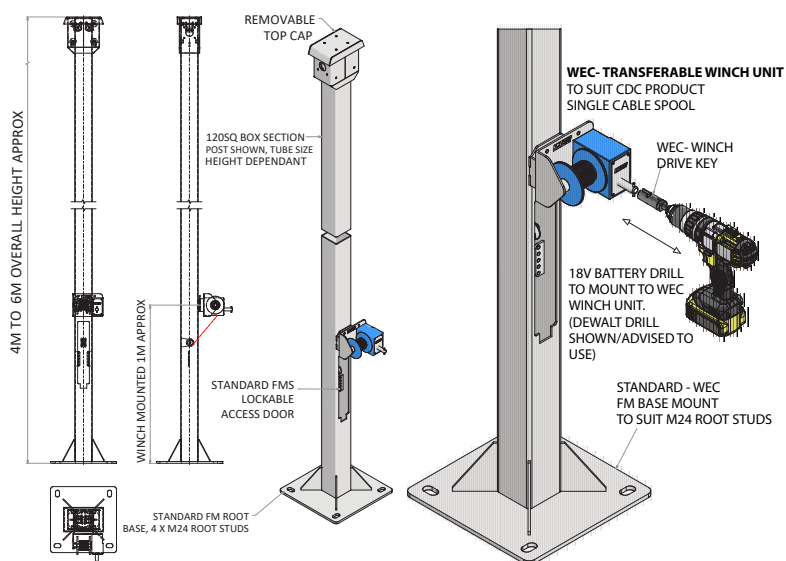
**Fasteners:** Grade 8.8  
BS3692:2001, BS4190:2001,  
DIN931, DIN934

**Design Wind Loading:**  
In accordance with CP3 chapter V Pt 2 & BS 6399 Pt 2:1997

**Paint Finishes:** BS4800 and RAL colour range



### TECHNICAL SPECIFICATION



### MODEL REFERENCE

**CDC4**

4 metre pole

**CDC6**

6 metre pole

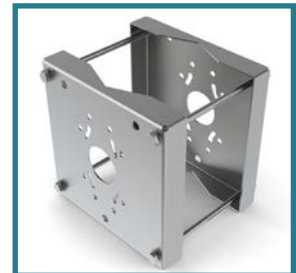
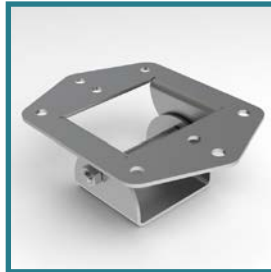
# BRACKETS AND ACCESSORIES

## CAMERA MOUNTS

The WEC fixed CCTV camera housing brackets and external pole clamp brackets allow up to 5 cameras to be attached to a pole.

They are robust heavy duty and weather-resistant brackets suitable for both internal and external use.

Camera mounts can be ordered in addition to your camera poles and towers.



## POLE & TOWER ACCESSORIES

WEC manufactures a wide range of CCTV accessories compatible with our range of CCTV pole and tower export products.

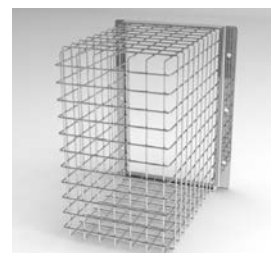
From pole top camera mounting to anti vandal accessories such as anti-climb brackets and security cages, we can offer a full package to suit your CCTV requirements.

## ANTI-CLIMB BRACKETS

These can be fabricated to suit any of our poles or towers.

## CAGES

WEC CCTV Cages are designed to protect your CCTV equipment and external lighting from vandalism, theft, and misuse. Fabricated from heavy duty galvanised steel rod, the cages can cope with the severest of abuse from vandalism or accidental damage.



# BESPOKE AND DESIGN

## BESPOKE PRODUCTS

### JB AND WASHER BOTTLE BRACKET



WEC CCTV offer a vast range of bespoke products. Whatever your camera mounting requirement, we have the solution for you.

### CONCRETE BLOCK



Our WEC Concrete Blocks make for easy and rapid deployment and can be adapted for any of our CCTV Poles, Columns or Cabinets. This makes them the ideal solution for when the use of temporary CCTV systems is required, e.g. motorway maintenance.

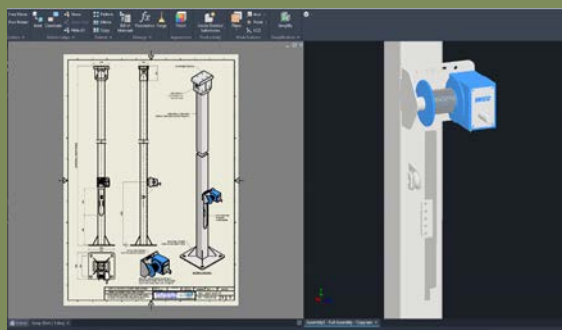
### TELESCOPIC CAMERA POLE



Our Telescopic Camera Pole are available in heights from 4m-8m and is an ideal column for temporary security measures, such as building sites and outdoor events.

## READER / INTERCOM POSTS

- Bespoke design service tailored to meet various requirements
- Mounting of card readers/intercoms for car & lorry heights
- Stainless steel options for offices/high profile areas
- Fabricated and designed to suit specific readers/intercoms



FULL DESIGN SERVICE AVAILABLE  
INCLUDING BASE AND WIND  
CALCULATIONS

# WEC GROUP'S MAJOR EXPORT DESTINATIONS



**OUR PRODUCTS ARE SPECIFIED  
BY THE LEADING OIL COMPANIES  
IN THE UAE**



## Recent Export Projects

- Dubai Metro Red Line Extension – Dubai
- The Myriad, Muscat - Residential And Retail Complex
- Container Terminal 4 of the Port Expansion project - Jebel Ali
- Museum of the Future – Dubai
- Ohanet gas development, Algeria
- Upper Zakum oil field project, Coast Abu Dhabi
- Al Zour Refinery Oil Refinery - Kuwait
- El Merk Central Processing Facility, Algeria
- Seif Palace Kuwait City
- Kauther depletion compression project, Oman
- Petro Rabigh Phase Oil Refinery II project, Jeddah Saudi Arabia
- Guggenheim Art Museum, Abu Dhabi
- Storage Dam Wilyat Al Hamra, Al Dakhliyah – Oman

**CONTACT THE TEAM NOW TO  
DISCUSS YOUR CCTV COLUMN OR  
BRACKETRY REQUIREMENTS**



**WEC**  
GROUP

Britannia House, Junction Street,  
Darwen, Lancashire, BB3 2RB,  
United Kingdom

**Sales Direct: +44 (0)1254 700200**

**General Enquiries: +44 (0)1254 773718**

Email: [cctvexport@wecl.co.uk](mailto:cctvexport@wecl.co.uk)

**Web: [www.wec.uk.net](http://www.wec.uk.net)**

WEC CCTV is a trading division of WEC Group Ltd.

[www.wec.uk.net](http://www.wec.uk.net)