



THE MEADS REACH
BRIDGE PROJECT

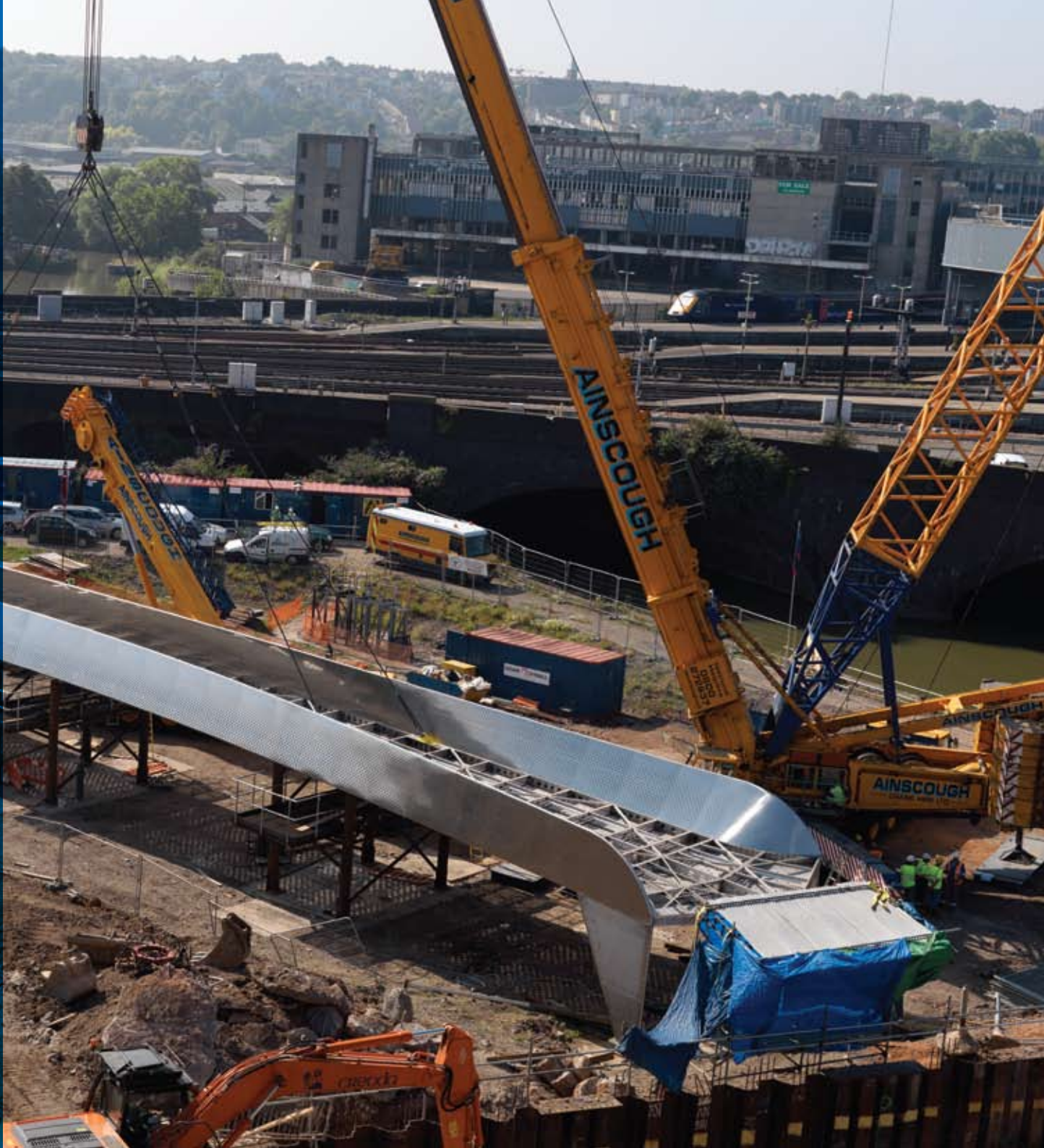
m-tec

m-tec is a Trading Division of **WEC**
GROUP Ltd.

The Meads Reach Bridge was fabricated by m-tec the architectural division of the WEC GROUP at their Darwen Lancashire plant . The structure was made in 8 sections from 2205 duplex stainless steel, this material was used for its strength and corrosion resistance, it was then transported to the Bristol location welded together and polished to one complete structure. The footbridge which measured 55 metres in length weighed in excess of 75 tonnes was lifted across the river in one piece and installed.

m-tec would like to thank everyone involved with the project which was fabricated and installed on time and in budget.

The team included Niall McLaughlin Architects, Cyrill Sweett, Gleeds,Price&Myers,Dean&Dyball and m-tec for Castlemore securities.



Niall McLaughlin Architects is a London-based practice that designs high quality modern architecture. We put a strong emphasis on the inventive use of building materials, the qualities of light and the relationship between the building and its surroundings.

The bridge was designed in collaboration with artist Martin Richman. The bridge is a stressed skin arc of stainless steel, picking up light from the sky and water, changing with the weather and the time of day.

The competition judging committee wrote: 'Architecture, engineering and lighting are beautifully combined as the simple elegant structure that the brief envisaged'.

Niall McLaughlin Architects

Price & Myers Consulting Engineers designed the structure of the Meads Reach Bridge in Bristol. The bridge was designed by the Price & Myers Geometrics team, who apply elements of form, structure, materials and manufacture to interpret unusual ideas and make them a reality. Projects of this type often seem complex, but are built on tried and tested principles of geometry and engineering. Price & Myers were involved from the initial modelling to the final fabrication.

PRICE & MYERS



As principle contractor for the Mead's Reach Bridge, Dean & Dyball Civil Engineering designed, supplied and installed the bespoke stainless steel footbridge. Providing an essential link between a new residential and commercial development, Dean & Dyball were involved with various elements of the project including the planning and co-ordination of the 75T bridge lift, stone column ground improvements for the 1000T telescopic crane, specialist lighting within the bridge structure, piled tubular steel reinforced concrete abutments and footpaths.

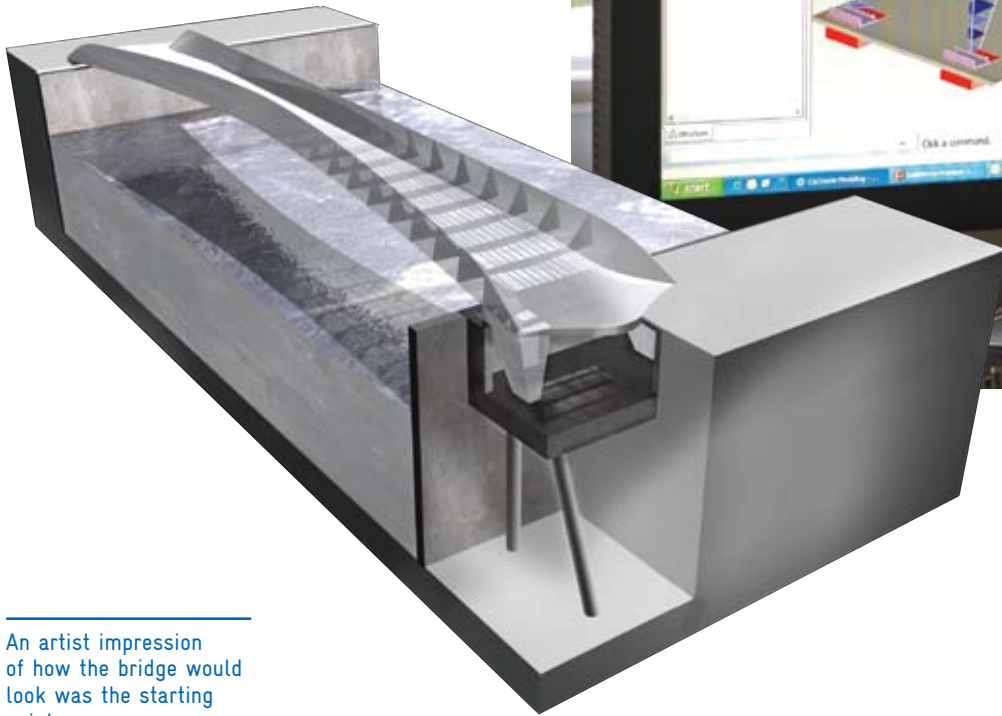


As project manager, international construction and property consultancy Cyril Sweett has been involved with every major stage of the project and the Temple Quay development since December 2006 from choosing the construction team for the bridge to selecting the fabricator. Design, construction and delivery have presented engineering challenges that have been successfully overcome by a collaborative approach from all involved that has ensured the bridge stays true to the architects' concept and becomes a striking focal point to the new Temple Quay area.

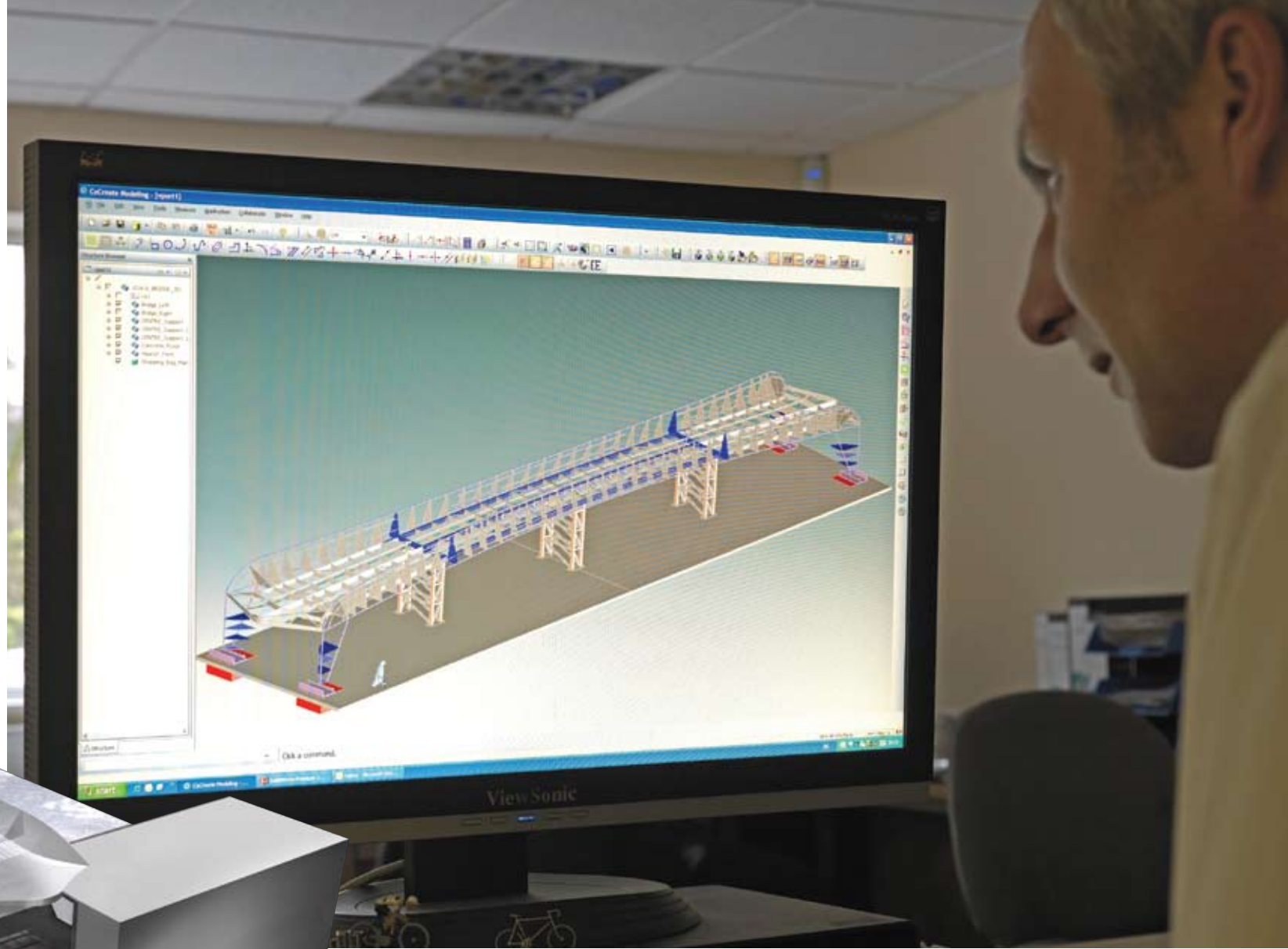


As a world leader in the manufacture and supply of stainless steel, Outokumpu is pleased to have supplied the 2205 duplex stainless steel used for the Mead's Reach Bridge. Such a project required a high quality, high strength stainless steel that offered long term sustainability, which in turn would provide lifecycle cost benefits.

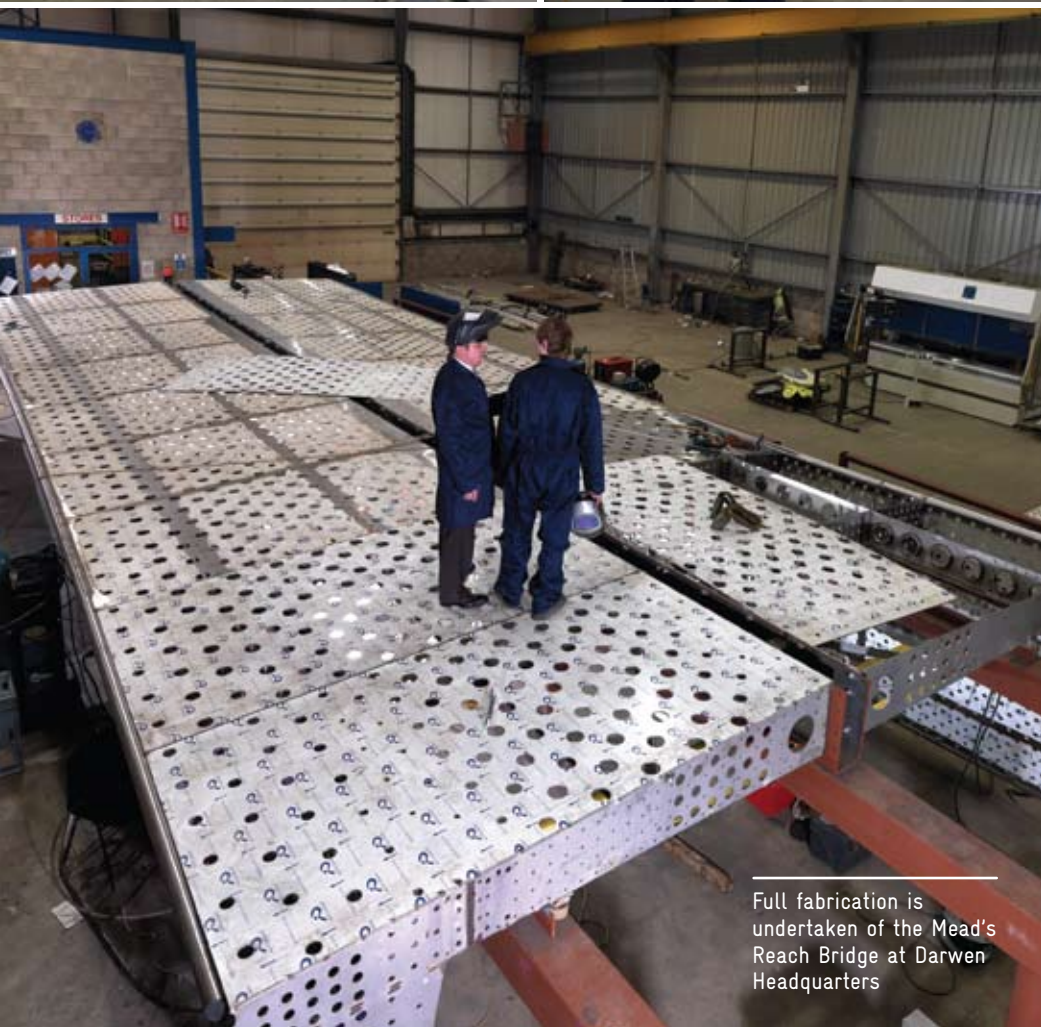




An artist impression of how the bridge would look was the starting point



Our inhouse Design Team were set the task of producing the fabrication drawings



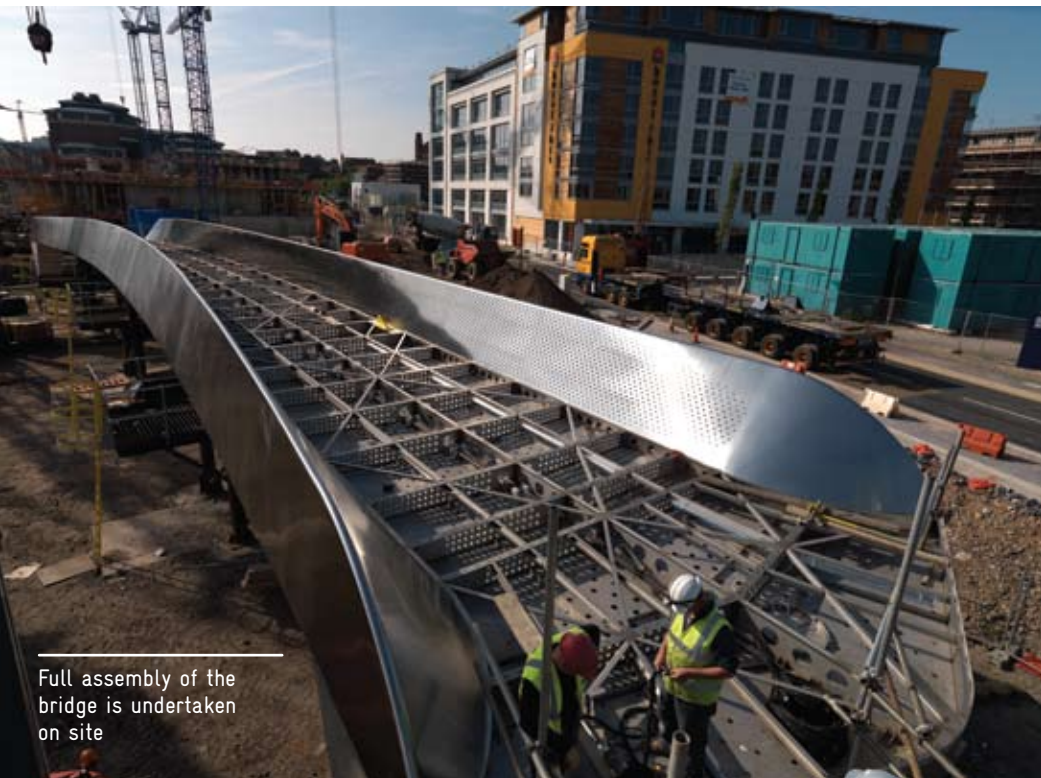
Full fabrication is undertaken of the Mead's Reach Bridge at Darwen Headquarters

Each section is inspected
prior to sign off



The bridge sections arrive on site for assembly



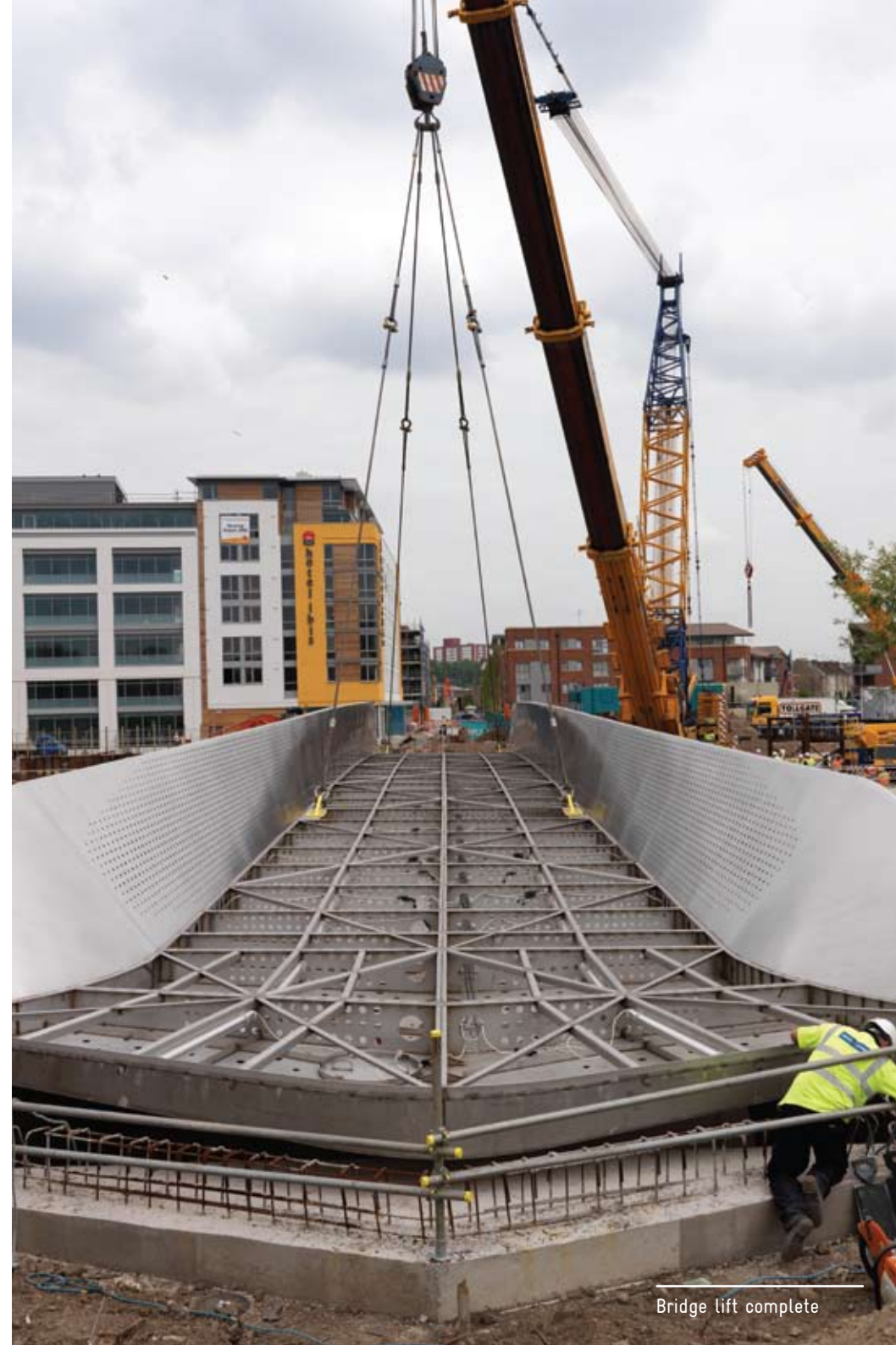


Full assembly of the bridge is undertaken on site

Preparation for bridge lift is made ready



Bridge lift commences



Bridge lift complete



The completed structure



Divisions



Please do not hesitate to contact us to discuss your requirements.

WEC Group Ltd
Britannia House
Junction Street
Darwen
Lancashire
BB3 2RB

Tel: +44 (0)1254 773718

Fax: +44 (0)1254 700254

www.wec-group.com

Tom Elliot
Division Manager

Mobile: + 44 (0)7974 783287

Email: info@m-tec.uk.com

