

m-tec

a division of the

WEC

GROUP





Darwen Spitfire WWII Memorial

Darwen was the smallest town in the UK to finance a spitfire during WWII, and the Spitfire memorial will be a lasting reminder of the Town's contribution to the War Effort. The sculpture has taken two years to complete; and costing around £175k has been 100% funded, manufactured and donated by the WEC Group to the people of Darwen.

The motivation behind the donation is to recognise and remember the massive contribution the people of Darwen made when they managed to raise the cost to purchase a spitfire for use in the WWII R.A.F. The 3:1 ratio stainless steel sculpture, with a wing span measuring 3.8 meters and standing 6.9 meters high has been hand crafted by WEC Group's own apprentices.



TOP 100 EMPLOYER — 2014 —

Brought to you by
National
Apprenticeship
Service

Sponsored by
City & Guilds





Darwen Spitfire Memorial





Made by apprentices

Our skills and attention to detail ensured the finished spitfire was a striking sculpture that showcases the high standards we set for our apprentices.

The finished project also demonstrates their passion to work as part of a team who can deliver the quality expected by our clients. The Darwen spitfire is the town's legacy to the people of Darwen who made the contribution to the country.



**DONATED TO THE PEOPLE OF DARWEN BY
STEPHEN HARTLEY**

The Darwen Spitfire Memorial was donated to the Town of Darwen by Stephen Hartley's company, the WEC Group.

This Memorial commemorates the Spitfire V R7519 "Borough of Darwen" fighter plane brought by the People of Darwen during the Second World War and is a lasting reminder of the Town's contribution to the War Effort.

A fund to buy the original plane for the RAF was launched in the town in September 1940 by Owen John Gregory and the People of Darwen managed to raise the sum of £5,707 in less than four months, an outstanding achievement during those difficult times.

The Darwen Spitfire V R7519 was accepted into service on 26th March 1941 and allotted to 82 Squadron. It saw a considerable amount of action during its service before it went missing on 14th July 1941 during a bomber-escort operation in the North of France.

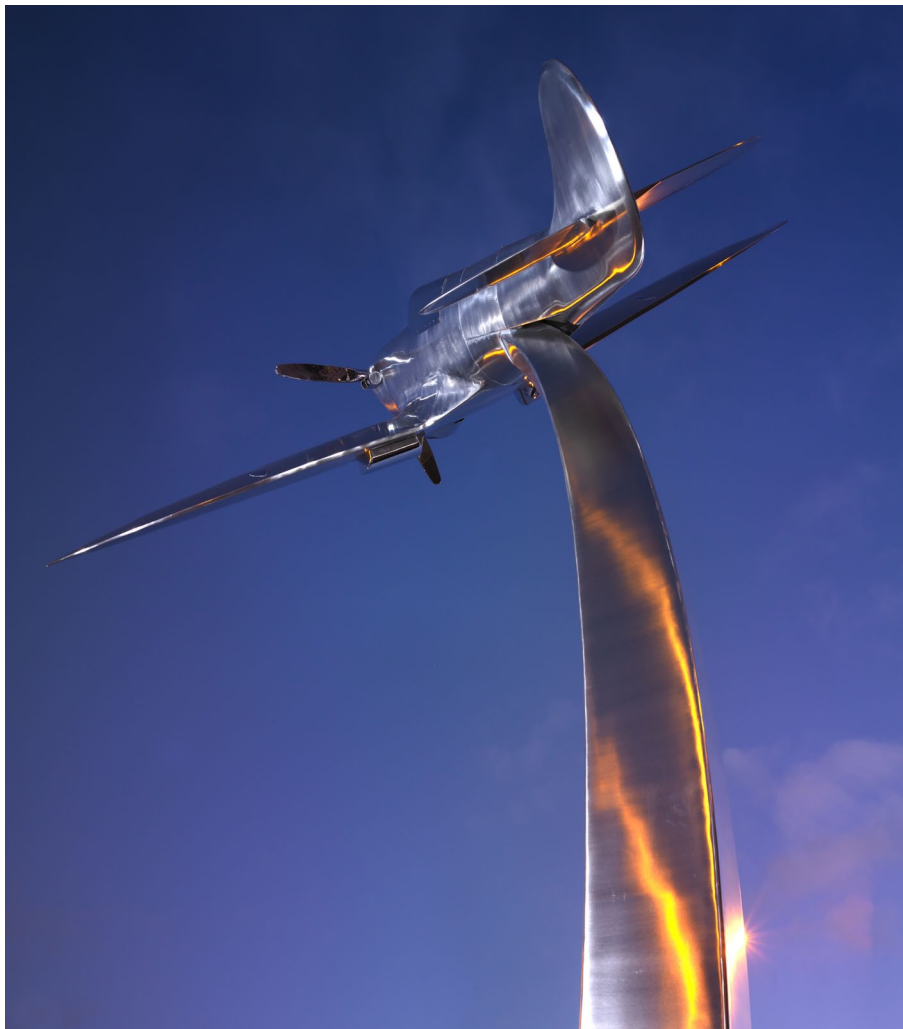
The People of Darwen can justifiably be proud of the aircraft they so generously provided.

Unveiled in November 2012, the Darwen Spitfire Memorial was designed by Peter Roberts and fabricated in stainless steel by local apprentices from the WEC Engineering & Welding Academy, Junction Street, Darwen under the supervision of Training Instructor Kris Mercer.



UNVEILED IN NOVEMBER 2012 AND INSTALLED BY

WEC
GROUP



Darwen Spitfire Memorial



m-tec

Specialist metal fabricators and consultants

The Architectural Division of WEC Group Ltd

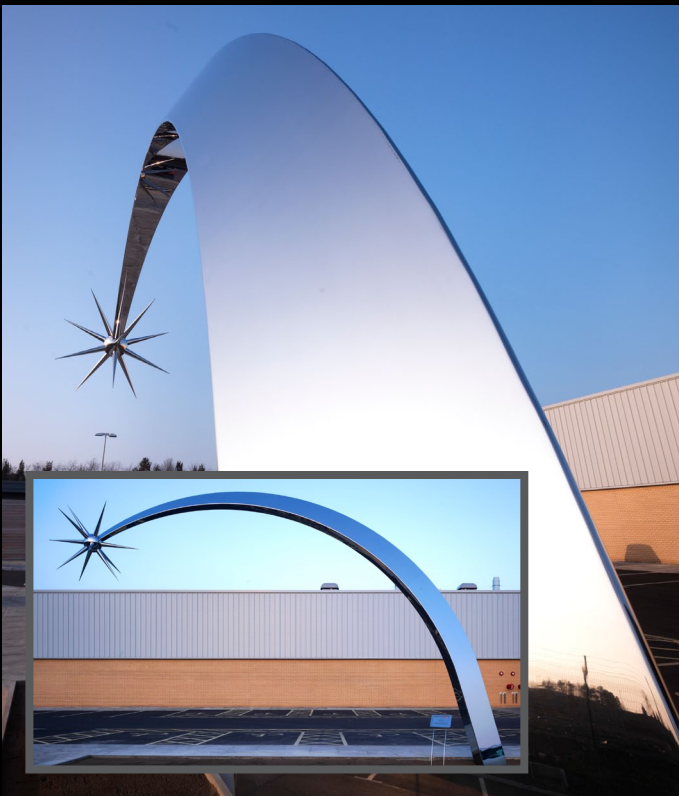
We specialise in the fabrication of bespoke public art, working with architects, designers and artists to bring their projects to life. We utilise our in-house services to provide cost effective solutions to meet our clients' needs. We have a large portfolio of work which demonstrates our skill and ability to deliver the highest standard of workmanship.

Stainless Steel is the material we use predominantly and is extremely durable and provides a stunning finish to ensure our sculptures withstand the test of time.



02 Ribbon

A bespoke and complex ribbon of metal containing thousands of LED lights for the Telefónica Head Office in the UK.



BAE Starburst Sculptures

We were commissioned to build 5 of these on behalf of BAE to be sited outside their munitions sites in the UK.



The World Globe

Exported to Nigeria as a focal point in the town of Uyo as part of a large development.



The Concorde Nose Support

A stunning rotating support for this iconic piece of the aircraft.



The Swirl Didcot

A twisting sculpture of complexity set in Didcot to represent an apple peel of days gone by at the former apple orchard where it stands today.



Stainless Steel Canopy

A stunning bespoke canopy for a client which incorporates a fully electronic screen which can be used as a sun shade.

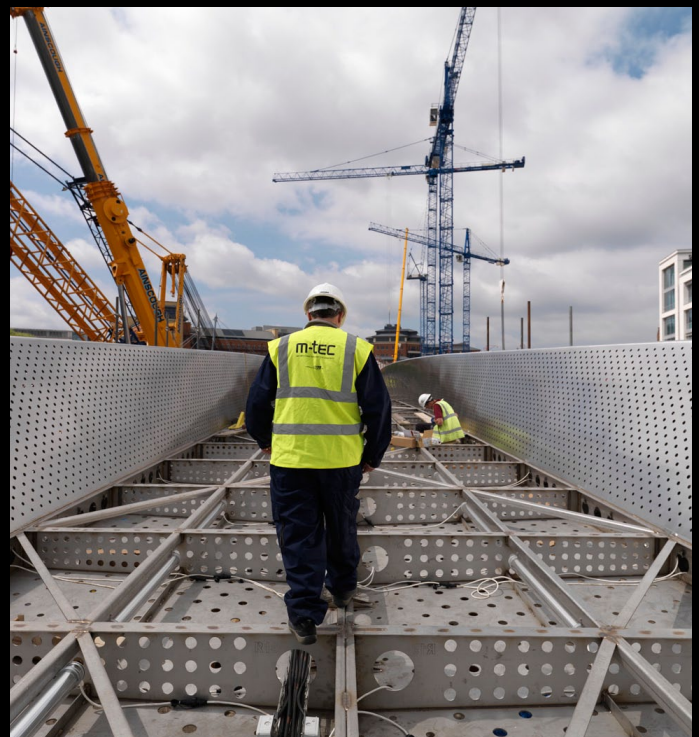
m-tec

Specialist metal fabricators and consultants



The Meads Reach Bridge

The 55 Metre, 75 Tonne footbridge situated in the Temple Quay II area of Bristol was fabricated by m-tec. The bridge was made in eight sections and delivered to the site where the sections were welded together. The Footbridge was then lifted and placed across the river in one piece. This project is a testament to our capability.



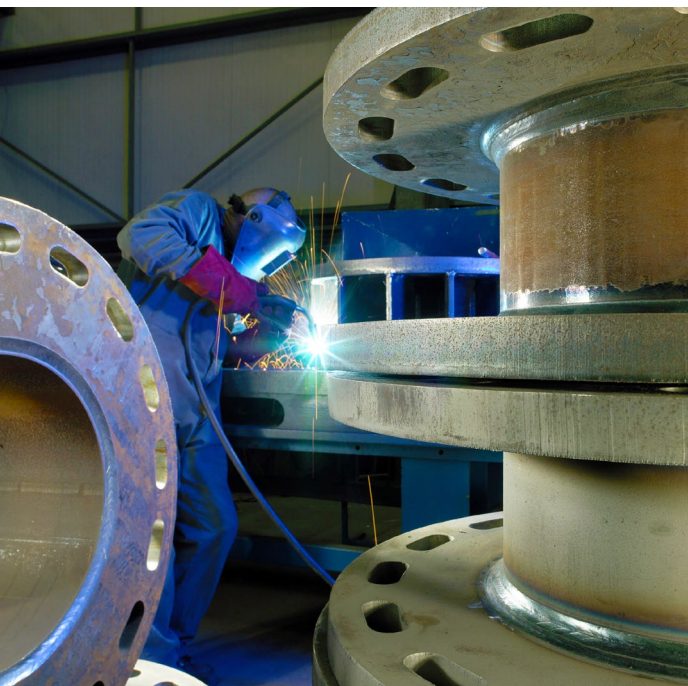
The Meads Reach Bridge





WEC FABRICATION

Some of our day to day general fabrication work ranging from heat generation, heavy fabrication, railway bridges, petrochemical and offshore industry. Our skill range allows us to work in many different sectors.

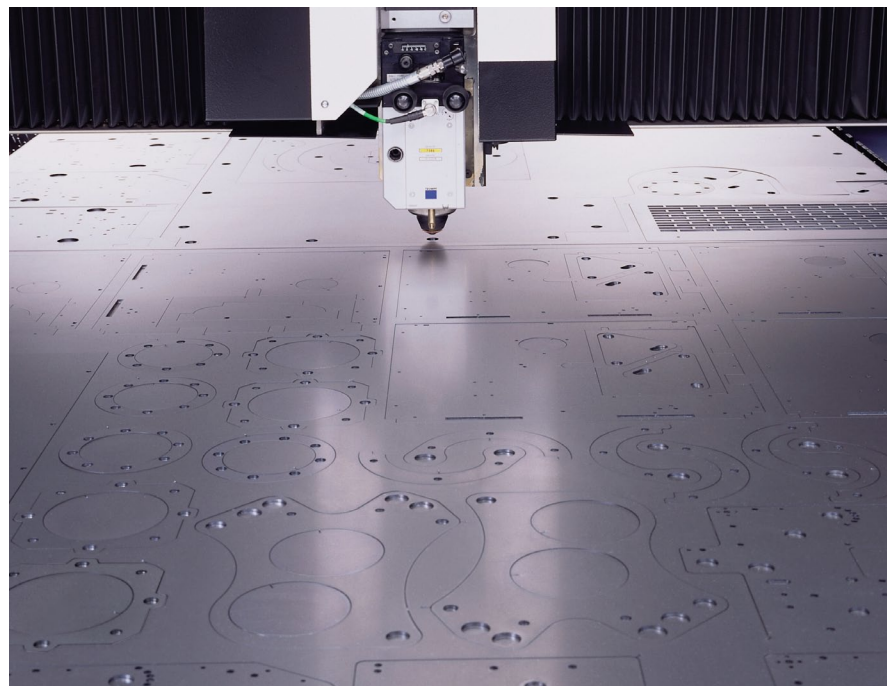
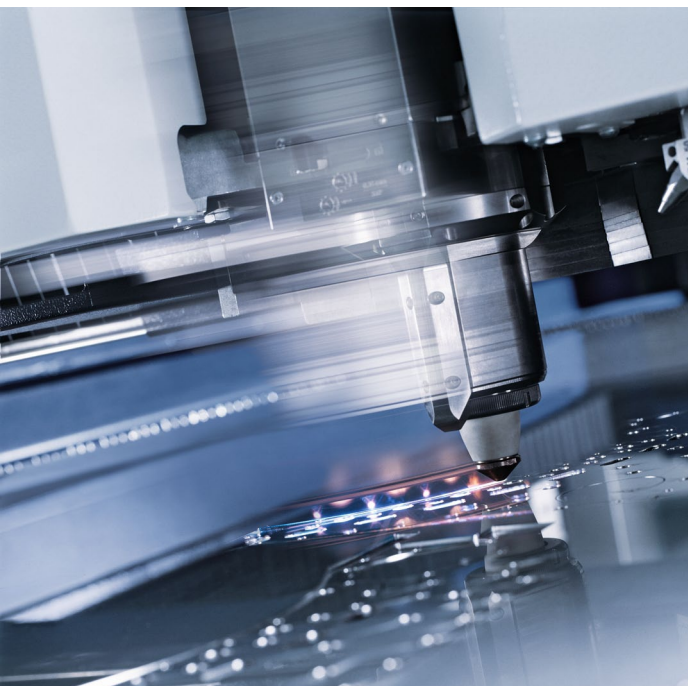
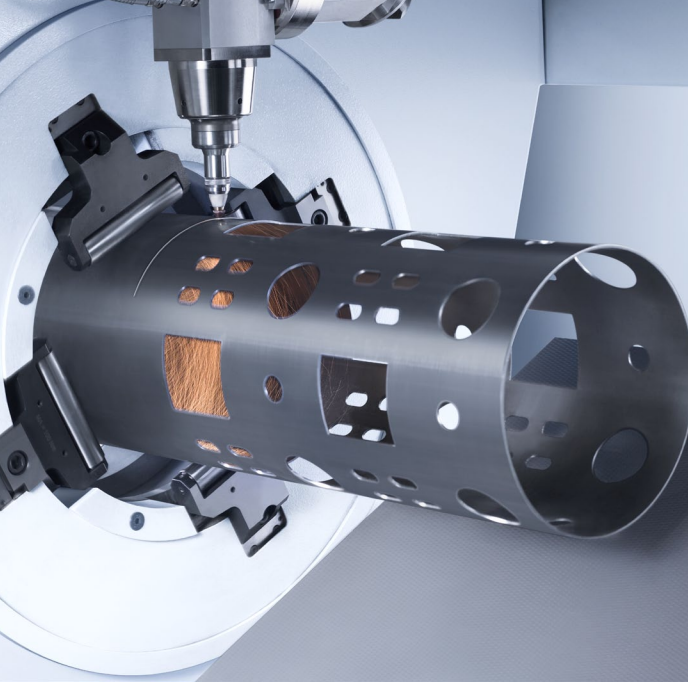


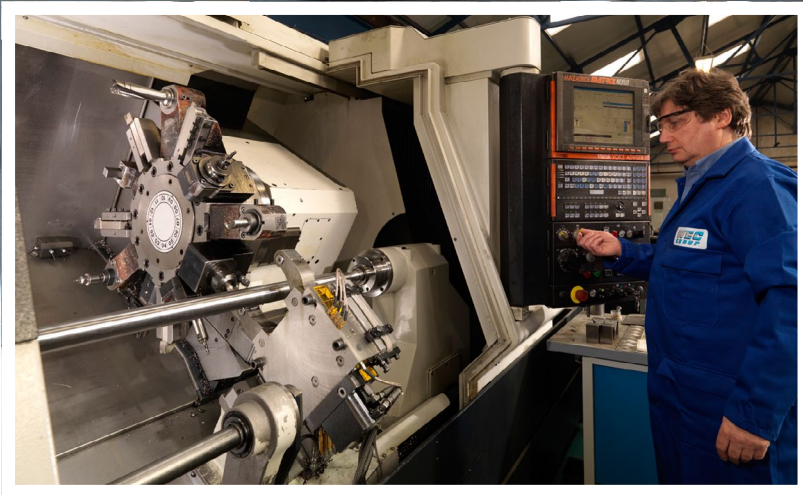


WEC LASER

We have our own laser cutting division where we use the latest laser cutting technology, including flatbed, box cutting and tube cutting. We also have an in-house Waterjet cutting division.

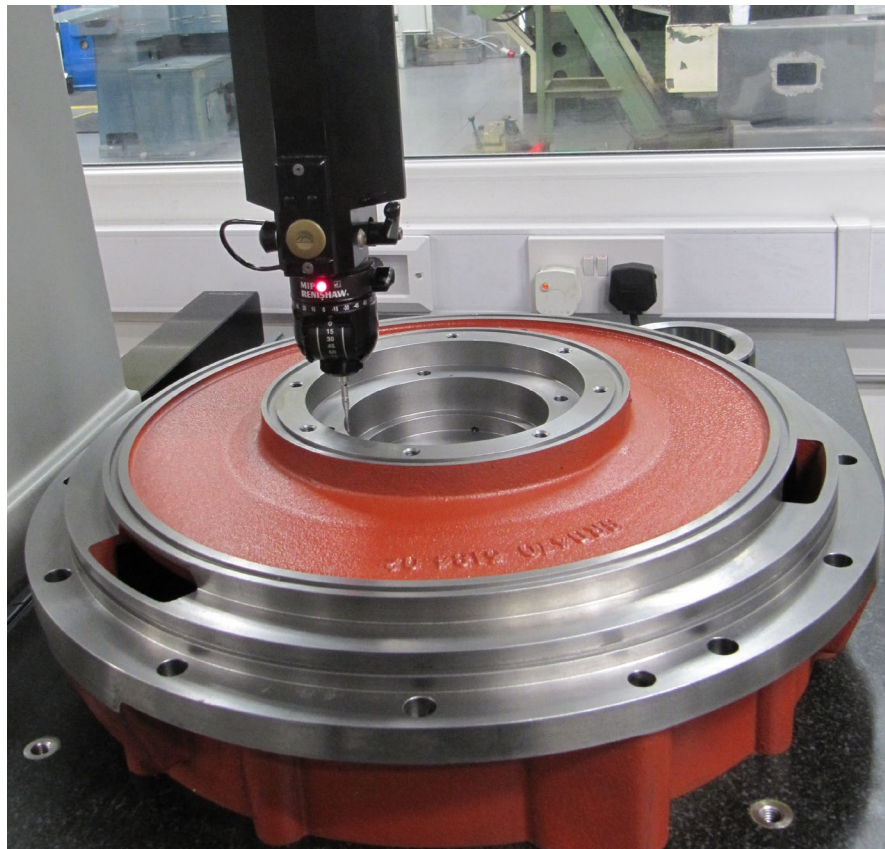
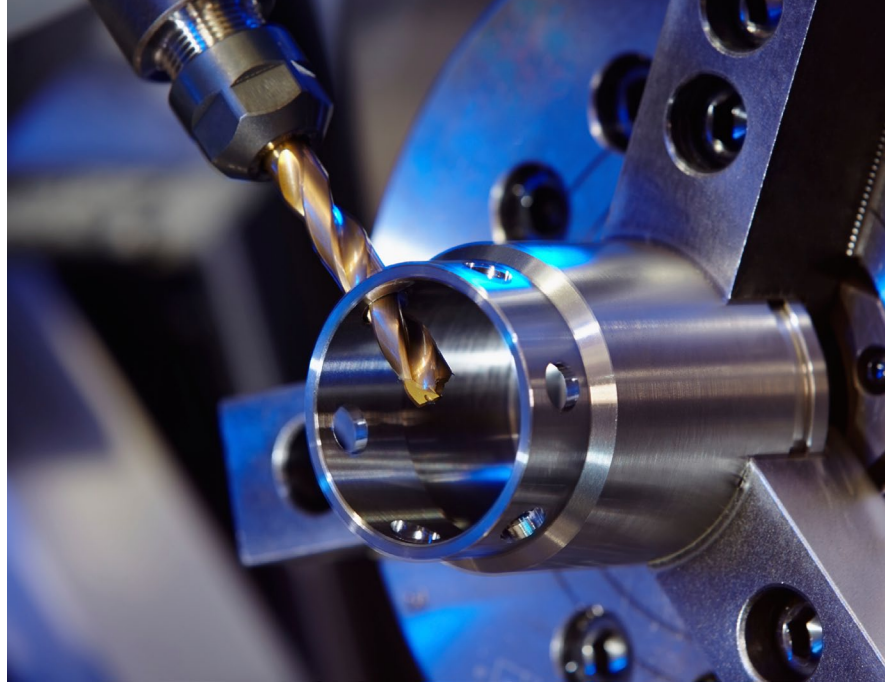
Our cutting capability is up to 30mm in Laser and 200mm in Waterjet. W





WEC MACHINING

Our company boasts a specialist machining division, utilising the latest technology for both small and large machining.





CCTV

WEC CCTV

Our CCTV division supplies CCTV structures to the UK and the overseas security industry. We fabricate most of the support structures for the congestion charging in London and are a supplier to the highway's agency for the active traffic management projects on UK Motorways.





STREET FURNITURE

Our newest division, Goose Foot, manufacture a range of street furniture products from benches and bollards to litter bins and cycle stands. The division also work closely with designers, architects and councils to provide bespoke street furniture products.



Bespoke seating installation for ITV HQ



Seats



Benches



Bollards



Cycle Stands



Litter Bins



Bespoke



Thank you for taking the time to read through this short guide. We hope that what you see will provide assurance that we can deliver the spitfire monument – It will be a lasting tribute for all to visit for many decades to come.



WEC Group Ltd

Britannia House,
Junction Street,
Darwen, Lancashire,
BB3 2RB

t: +44 (0) 1254 773718

e: info@wecl.co.uk

www.wec-group.com



m-tec

Springvale House,
Springvale Road,
Darwen, Lancashire,
BB3 2ES

t: +44 (0) 1254 773718

e: info@m-tec.uk.com

www.m-tec.uk.com



Nick Hancock Design Studio

17 Ovanna Mews
19a Buckingham Road
London,
N1 4EY

t: +44 (0) 20 7722 1572

e: hello@nickhancock.com

www.nickhancock.com