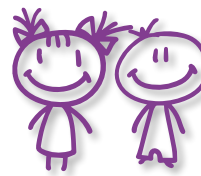


2017

# WEC GROUP GROUND TO TOWER WALK

SAT 24 JUNE 2017 AT 10AM

In support of



# Kidscan

Children's cancer research

## ENTRY FORM

FULL NAME:

AGE:

EMAIL:

PHONE NO:

DEPARTMENT:

EMERGENCY  
CONTACT:

## HOW TO ENTER

Entry is £2 for adults and free for under 16's.

Children must be accompanied by an adult.

Please fill out a separate entry form per participant.

Enclose your completed entry form along with your payment & return to the marketing department before the closing date on 1st June 2017.

Please note that entries cannot be accepted after the closing date.

There will be designated walk leaders on the day to ensure participant safety and help coordinate the event. If you are interested in volunteering as a walk leader please tick this box and a member of the marketing team will contact you with further details.

---

## EVENT TERMS & DECLARATION:

I declare that the information given on this form is correct. I confirm that I am physically fit enough to take part in this event. I agree not to hold the promoter/promoting body responsible in any way for injury or loss as a result of my participation in the WEC Group Ground to Tower Walk 2017.

PRINT NAME:

DATE:

SIGNATURE:

\* If under 16 please ask a parent or guardian to sign on your behalf.

---